

OVERVIEW:

Hub Manager Professional Software makes programming and operation of Secured Series Access Systems fast and mistake free. It is a powerful and easy-to-use software solution for most applications and takes “Access Control Simplified” to a new level. With its fast and comprehensive management reports, Hub Manager Professional Software meets the needs of the mainstream commercial access control market. With Version 8.0 of Hub Manager Professional Software, IEI provides new features and improved functionality for access control.

Version 8.0 of Hub Manager Professional is included with all IEI Secured Series systems and kits, and with prox.pad Plus series of products and LS2 Series of products. It can also be downloaded free of charge from the IEI website at <http://www.ieib.com/support-software-downloads.html>. Version 8.0 is reverse compatible to all pre-existing Secured Series controllers.

Vista Compatibility

With Windows Vista more prevalent in the marketplace, Version 8.0 of Hub Manager Professional Software will support Windows Vista operating systems, including Vista Home Premium and Vista Business. It also supports Windows server 2003 and 2008 Standard and Enterprise. The requirements to support the current Windows Vista operating systems are a major enhancement for this version of the software.

Max 3 Output Module Supported

This version of Hub Manager Professional Software will support programming for the new Max 3 Output Module (M3-OM). The Output Module will add 8 outputs per door. The software will allow you to specify a custom name and timer value for each of the 8 outputs. Any combination of these outputs can be assigned to a user. Applications for this version of the software and the Output Module can include elevator control, handicapped door control, and controlling or triggering a camera or DVR upon a card read or PIN code.

Temporary Users

The use of Temporary Users is included with this version of the software and the Max 3 v2 controller. With this option you can specify whether or not to grant access to users that are set to ‘Temporary’ status. You can specify the start and stop date of each user individually, thereby granting or denying access to specific users based on date. With this feature, a user will only have access between a start date and a fixed stop date.

Access Level Detail Screen

This version of Hub Manager Professional Software includes enhancements to the Access Level edit screen which now make it easier for you to set up access levels. The Access Level Detail screen in the software follows a logical flow identified with numbered steps. You can assign individual users access levels to specific doors, enabling you to trigger pre-determined outputs for those doors and users. This adds a new level of flexibility to your access control requirements.

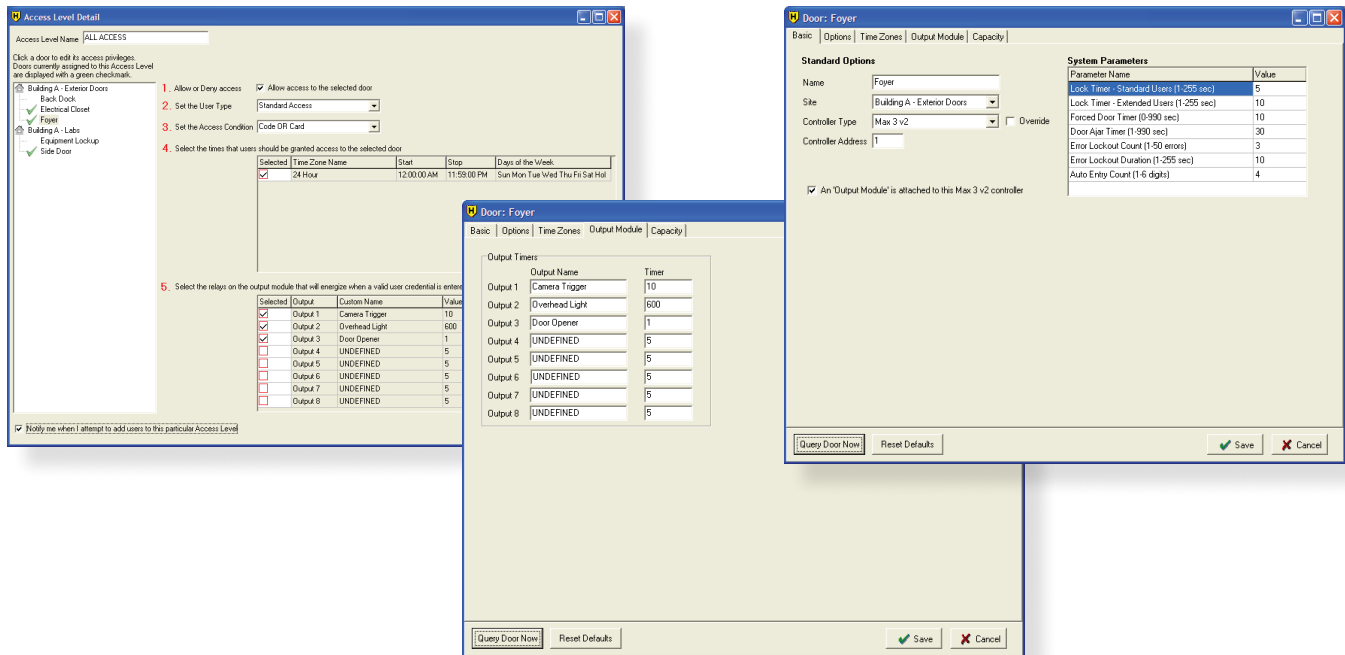
Hub Manager Professional Software

PRODUCT HIGHLIGHTS**Major Functionality**

- Windows Vista Compatible (Vista Business & Vista Home Premium)
- Supports the Max 3 Output Module (M3-OM), which adds 8 outputs per door
- Temporary Users feature
- Improved access level detail screen with each door edited separately
- Delete user feature
- Expanded time management reports

Additional New Features & Enhancements

- Selectable modem retries
- Selectable installation directory, important for Latin America versions of Windows
- First-In auto unlock can be triggered by user
- DTD printer support – Data Transfer Device for LS & prox.pad Plus IR
- Faster data communication across IP networks



Delete User Feature

The Delete User feature allows you to select specific users and delete them from the system. It allows a user to be completely deleted from the database. This function is useful in installations that are reaching the maximum number of users per site. It also makes large database management easier. The Disable User and Retire User options continue to work as another option.

Expanded Time Management Reports

The Time Management Report has been expanded to include three types of reports. A Detailed Daily Report shows the detailed daily activity of each user and includes the total number of gross and clear time at the end of each day. A Summarized Daily Report only shows the daily total gross and clear time. A Summary Report shows the total gross and clear time for a specified date range. (Gross time is defined as the total amount of time from the first IN event of the day to the last OUT event of the day, including any time between IN and OUT events throughout the course of the day. Clear time is defined as the total amount of time, from the first IN event of the day to the last OUT event of the day, excluding any time between IN and OUT events during the day.)

Selectable Modem Retries

Hub Manager Professional 8.0 will now attempt to retry the modem dialing sequence if a connection fails for any reason. You can now define the number of modem retries. The number of redials is set to 3 by default.

Selectable Installation Directory

Version 8.0 will allow you to select the drive and folder where you want to install Hub Manager Professional software. This feature allows you to install the program to any location you choose, such as a D drive.

First In Auto Unlock

The First In Auto Unlock feature is useful for applications where a door – such as the main front door of an office – is to remain in the locked state until a designated person – such as the receptionist who monitors that door – comes in. In this scenario, when the receptionist presents their credentials to unlock the front door, that door will remain unlocked until the specified time zone expires (normally at the end of the business day). This feature allows you to designate which users can trigger a First In Auto Unlock.

DTD Printer Support

The DTD (Data Transfer Device) Printer utility will include a print button in the software which will allow you to print a log file directly from the program. The saved data can then be viewed on the DTD screen and/or transferred to the PC as a text file. This feature will also enable the DTD to function like an HP Printer with early versions of prox.pad.

Faster Data Communication across IP Networks

This version of Hub Manager Professional increases the speed of data communications across IP networks. It supports the SEG-M at speeds of 100 Mbps.

