

eMerge Video Management System

Overview

The eMerge video management system offers high-end video handling capabilities in a small, scalable package. The system supports analog cameras with DVRs and IP cameras all simultaneously. All devices are network connected, and can be accessed with a common Web browser. Because it runs on an eMerge, no PC server is required.

Applications requiring digital video recorders (DVRs) can use the familiar Dedicated Micros DV-IP or DS2AD video servers. View-only camera capability for a variety of IP cameras is directly supported, requiring no NVR or DVR. Your network is the only physical connection between eMerge and any video component; relays and hardwired inputs are never required.

With eMerge, you build real time displays with any mixture of cameras - IP or analog - available on your network. A single mouse click lets you browse recorded video from any live camera. Events in the alarm and access control subsystems can initiate video recording, change camera telemetry, and switch video displays. Likewise, motion detected by cameras can initiate alarms in the eMerge alarm subsystem when used with a DVR.

Data logs for events that have associated video are shown in real time displays and historical reports are shown with icons that link to recorded video. A mouse click on the appropriate camera icon retrieves the related video stream and provides replay controls.

Live camera displays of single cameras, quads, and picture-in-picture (PIP) views can be built easily with eMerge. When PTZ controls are available, the user interface shows them and allows a click on the video display to reposition a camera.

Live views are also integrated into floor plan graphics and the Monitoring Desktop display that acts as a dashboard for video, alarms, and other security subsystems. For convenience, live video thumbnails can be detached and dragged onto your PC desktop, requiring very little screen real estate.

eMerge has a built-in library of IP video cameras that can be expanded in the field, right from the user interface at any time.



*All components are connected to the network.
Both IP and analog cameras are supported*

Feature Summary

- Seamless integration with access control and alarms
- Single user interface for IP and analog cameras, and DVR
- Operated completely from your Web browser
- Live video display in quad, PIP, and other formats
- System events initiate video recording
- Video motion detection generates system events
- One-click access to event video with browser playback
- PTZ controls integrated into browser displays
- Monitoring Desktop integrates monitoring of events and video

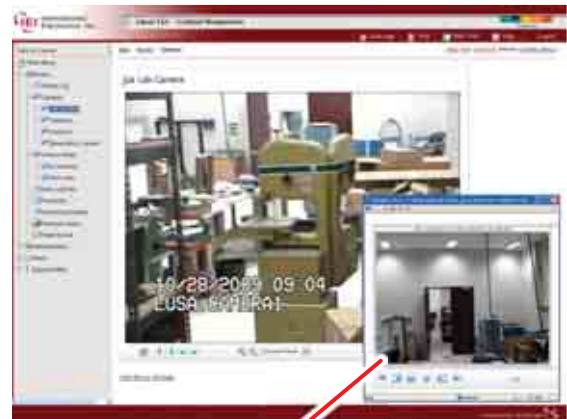
Specifications

- Supported DVRs; Dedicated Micros DV-IP, DS2AD, Milestone XProtect Enterprise, OnSSI/On-Net, Panasonic Digital Disk Recorder Models WJ-HD309a and WJ-HD316a.
- Supported IP cameras; Axis, IQinvision, Panasonic, Sony, Vivotek, and others. New models easily defined in user interface.
- Video data formats; JPEG, MJPEG, MPEG, others depending on video server
- 128 cameras maximum

FEATURE	DESCRIPTION
Video Alarm Notification	Custom icon displays in the monitoring desktop whenever there is video associated with an event or alarm
Motion Event Recording	Camera starts to record on motion in an area
Alarm Recording	Setup events from eMerge to trigger camera recording
Recording Notification Event	Notifies the user through eMerge UI when a camera starts recording due to motion or alarm
2/4 Video View	Monitor cameras from different DVR's simultaneously
PTZ Control	Pan, Tilt, & Zoom control from the eMerge UI (camera must be capable of these functions)
TCP/IP Communication	Uses reliable TCP/IP communication to all DVR Servers on the network
Preset Control	Setup and run custom camera presets directly
IP Camera Support	Connect to IP cameras on your network - no recording

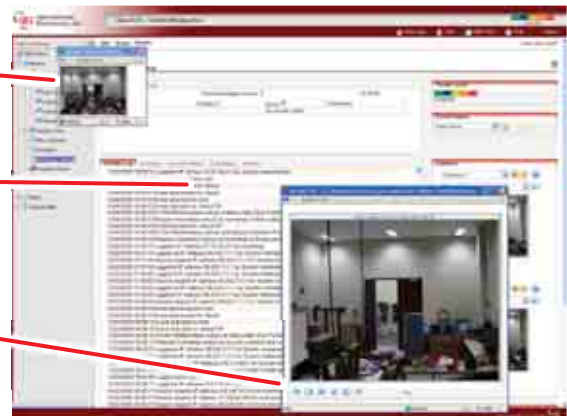


Video displays such as single camera, picture-in-picture, or quad can be easily built. Analog and IP cameras can be mixed on the same display. Telemetry and historical video browser controls are shown when these functions are available.



The historical video browser lets you go directly to stored video to view an event. You can also search forward or backward at various speeds, or frame-by-frame.

A video thumbnail can be placed anywhere on your desktop to show live, real time video for any camera.



Items in the event log marked with the camera icon have associated stored video. Hovering on the camera with the mouse displays which cameras are recorded. Clicking on the camera replays the stored video.

Familiar controls let you examine recorded video in detail. Video motion detection on DV-IP or DS2AD units is indicated by an overlaid rectangle.

Linear[®]
Building On Innovation.

USA & Canada (800) 421-1587 & (800) 392-0123
(760) 438-7000 - Toll Free FAX (800) 468-1340
www.linearcorp.com